

etramo

Mini-Maxi conveyor belts
Designed for hire!



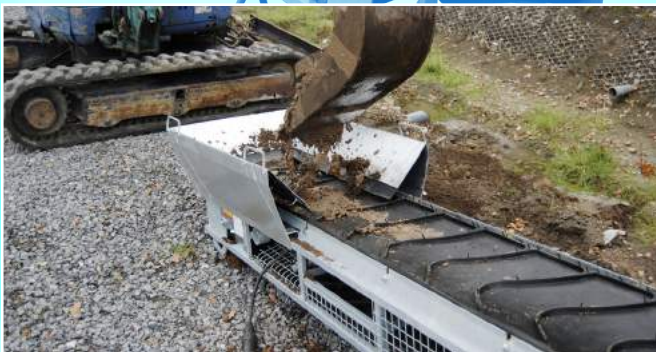
Essential in your hire programme !

Mini-Maxi conveyor belts

The updated **Mini-Maxi conveyor belts** are excellent hire equipment. They are industry trendsetters and belong in every hirer's catalogue !

Mini-maxi conveyors are ideal for **gardeners, renovation firms** and development or demolition **contractors**.

Get this unique rental leader into your store today !



Easy loading



Even easier installation!

50 tonnes / hour
thanks to its unique belt speed
of 24 metres / min

Efficient



A larger hopper permits loading with a mini excavator and reduces material spillage.

Practical



The movable **supports** allow you to place each conveyor belt exactly above the next one.

The handy **hoppers** ensure that each conveyor belt can be loaded perfectly.

Reliable



Only the **best materials** are considered for the Mini-Maxi conveyors.

A hot-galvanised steel frame, vulcanised rubber belt, steel belt scraper and Harting couplings.

Simple



A **simple belt scraper** keeps the belt clean. Openings are provided for assembly with scaffolding pipes and the belt can be easily adjusted.

The rubber belt and switchbox can be replaced in an instant too !



www.etramo.com for more information on our conveyor belts

Set-up in series



The conveyor belts are independent of each other and can be set up in series at any angle.



Several conveyor belts can be linked to each other, working on one power source, by using the connection cables.

Safety above all



Safety is a priority at Etramo ! Each conveyor belt is equipped with 2 **emergency stop buttons**, one on each side of the conveyor belt. One push on any emergency stop on any conveyor belt that is part of the series will halt all of the conveyor belts in the series circuit.

This unique safety switch action means the Etramo Mini-Maxi is one of the **safest**, if not the safest, conveyor belt in the market.

etramo

Advantages!

Designed by the hire industry
for the hire industry !

With 30 years' experience,
Mini-Maxi conveyors have been
exclusively designed for the hire industry.

We have listened to our customers and
taken account of their needs as well as
their users' needs for:

- A high yield, good use of capacity and long-term rental
- An extremely robust, galvanised steel frame with an ultra-reliable rubber belt
- A product that is easy to handle and store and very simple mechanically
- A unique product in the hire industry, little competition, high rental rates
- Mini-Maxi conveyor belts satisfy the strictest safety standards

Because of their **limited weight** and useful handles, the conveyor belts can be moved by 1 person and thanks to the forklift entry **apertures**, you can stack them **safely** with a forklift in no time.

The handy **stacking supports** let you store and/or transport the conveyor belts quickly in configurations of up to 6 units high to maximise your storage capacity.

Moving



Stacking



Storage



www.etramo.com for more information on our conveyor belts

Accessories



Large hopper



Small hopper



Support



Set of wheels

| Technical specifications | MINI-MAXI 2 M | MINI-MAXI 3 M | MINI-MAXI 4,5 M | MINI-MAXI 6 M |
|--------------------------|------------------------------------|------------------------------------|-----------------------------------|-----------------------------------|
| L x W x H in cm | 215 (253 w. handles) x 49 x 34 | 313 (343 w. handles) x 49 x 34 | 448 (478 w. handles) x 49 x 34 | 585 (613 w. handles) x 49 x 34 |
| Weight | 800 kg | 100 kg | 135 kg | 175 kg |
| Belt width | 40 cm | 40 cm | 40 cm | 40 cm |
| Motor | 0,37 Kw - 230 or 110 V (1/2 HP) | 0,37 Kw - 230 or 110 V (1/2 HP) | 0,50 Kw - 230 or 110 V | 0,50 Kw - 230 or 110 V |
| Belt speed | 24 m / min | 24 m / min | 24 m / min | 24 m / min |
| Maximum rising angle | 40° | 40° | 40° | 40° |
| Capacity | 50 tonnes / hour | 50 tonnes / hour | 50 tonnes / hour | 50 tonnes / hour |

These specifications are not binding and can be modified at any time without prior notice.

www.etramo.com

info@etramo.be



Your dealer: